

CATALOG NO. _____

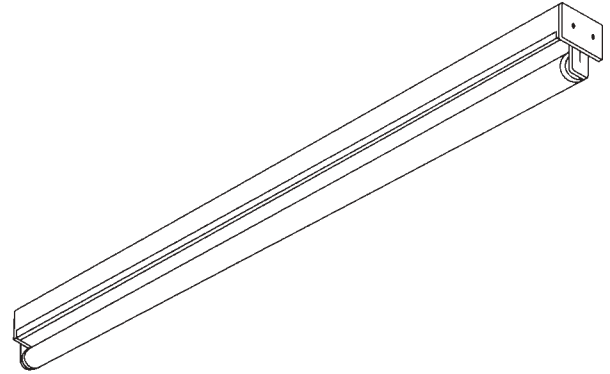
Crescent

TYPE NO. _____

JOB NAME _____

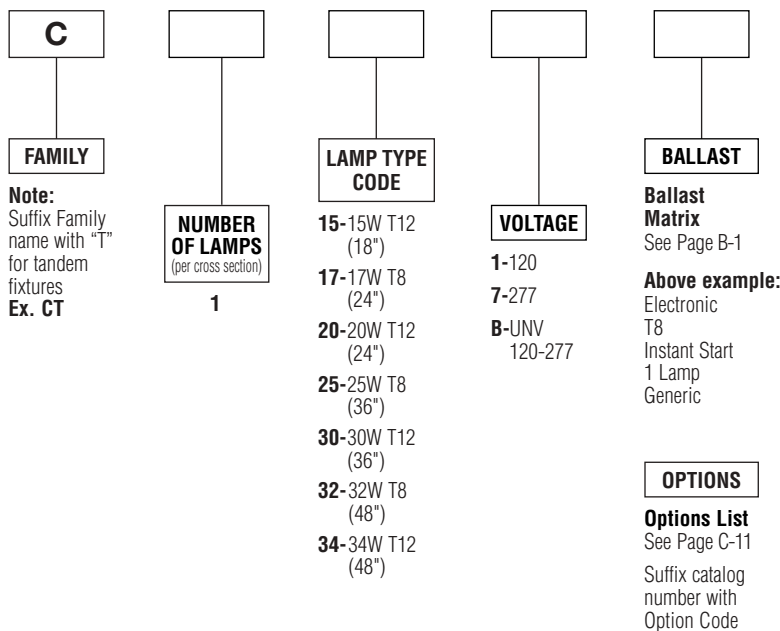
C-7

Narrow Channel (C)



ORDERING INFORMATION

Catalog Number: Example: C1321K1Y



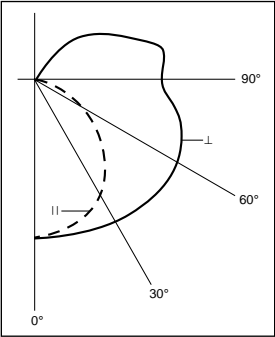
PRODUCT FEATURES

- Combination end plate/coupler can be used for individual mounting or slides into position between two fixtures, assuring integrity of row alignment.
- Symmetric and asymmetric reflectors are available for additional downlight and directional control.
- UL Damp Location labels are standard with this series.
- All 20 watt through 40 watt fixtures are suitable for mounting on low-density cellulose fiberboard surfaces.
- 1/4 turn fastener to lock ballast cover on housing.

PRODUCT AVAILABILITY

FAMILY	NOMINAL SIZE	NUMBER OF LAMPS (per cross section)	NUMBER OF LAMPS (per fixture)	LAMP TYPE CODE	LENGTH	WIDTH	HEIGHT
C	1 1/2'	1	1	15	18"	2 1/2"	3 11/16"
C	2'	1	1	17, 20	24"	2 1/2"	3 11/16"
C	3'	1	1	25, 30	36"	2 1/2"	3 11/16"
C	4'	1	1	32, 34	48"	2 1/2"	3 11/16"
CT	8'	1	2	32, 34	96"	2 1/2"	3 11/16"

One-Lamp Photometric Data



Coefficients of Utilization
Floor Cavity Reflectance 0.20

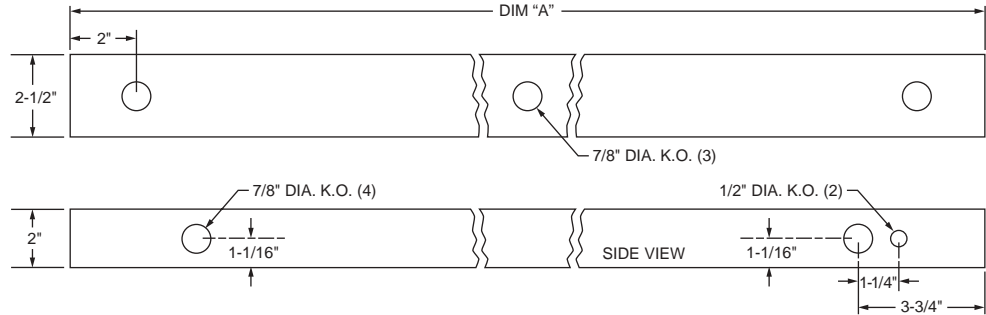
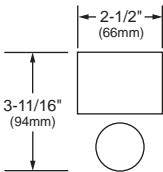
		80%			50%			10%		
RC		50	30	10	50	30	10	50	30	10
RW										
Room Cavity Ratio	1	88	84	81	79	77	74	69	68	66
	2	77	71	66	70	65	62	61	59	56
	3	68	61	56	61	56	52	54	51	48
	4	60	52	47	54	49	44	48	44	41
	5	52	45	39	48	42	37	43	38	35
	6	47	39	34	43	37	32	38	34	30
	7	42	34	29	38	32	28	34	30	26
	8	37	30	25	34	28	24	31	26	22
	9	33	26	21	31	25	21	28	23	19
	10	30	23	19	28	22	18	25	20	17

SPECIFICATIONS

Housing is die-formed of cold-rolled steel for uniformity and stability. All metal components are phosphate coated and finished in baked white enamel providing a minimum reflectance factor of 85%. Quarter turn type channel covers can be removed without the use of tools. All units include combination end plate/couplers. Fixtures are UL-listed and bear union and UL labels. Standard voltage is 120 volt 60 Hz.

DIMENSIONS

All KOs are 7/8" dia. unless otherwise specified.



DIM "A"		
18" FIXTURE	(457mm)	18"
2' FIXTURE	(610mm)	24"
3' FIXTURE	(914mm)	36"
4' FIXTURE	(1219mm)	48"
8' FIXTURE	(2438mm)	96"

Dimensions and specifications subject to change without notice.