

CATALOG NO. _____

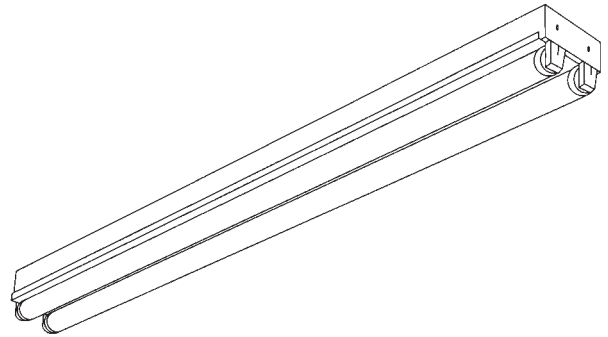
Crescent

TYPE NO. _____

JOB NAME _____

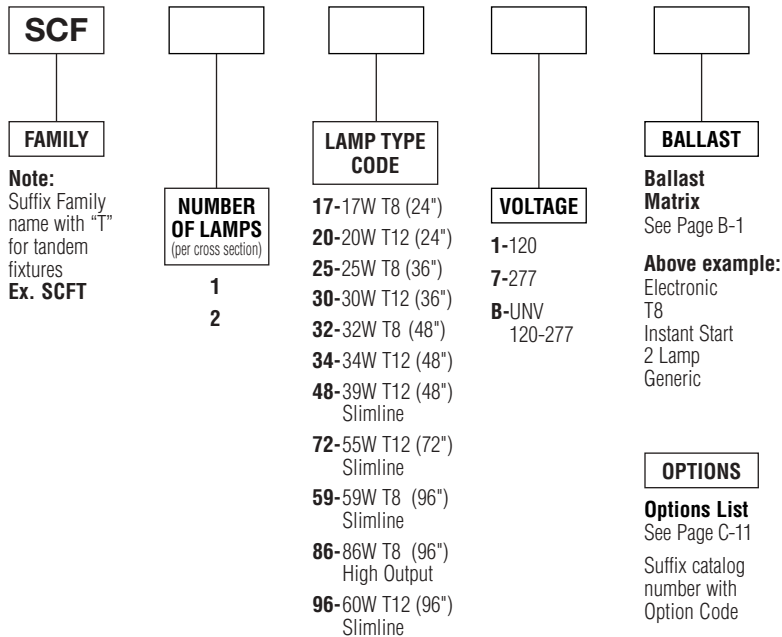
C-5

General Purpose Channel (SCF)



ORDERING INFORMATION

Catalog Number: Example: SCF2321K2Y



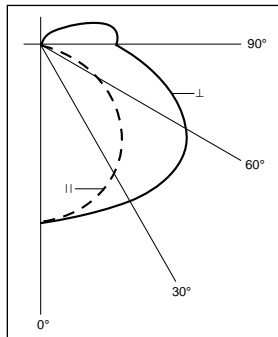
PRODUCT FEATURES

- Combination end plate/coupler can be used for individual mounting or slides into position between two fixtures, assuring integrity of row alignment.
- Optional heavy-duty 10" sleeve couplers can provide additional bracing at fixture junctures.
- Symmetric and asymmetric reflectors are available for additional downlight and directional control.
- UL Damp Location labels are standard with this series.
- All 20 watt through 40 watt fixtures are suitable for mounting on low-density cellulose fiberboard surfaces.
- 1/4 turn fastener to lock ballast cover on housing.

PRODUCT AVAILABILITY

FAMILY	NOMINAL SIZE	NUMBER OF LAMPS (per cross section)	NUMBER OF LAMPS (per fixture)	LAMP TYPE CODE	LENGTH	WIDTH	HEIGHT
SCF	2'	2	2	17, 20	24"	4 1/8"	3 7/8"
SCF	3'	2	2	25, 30	36"	4 1/8"	3 7/8"
SCF	4'	1	1	48	48"	4 1/8"	3 7/8"
		2	2	48			
		2	2	32, 34			
SCF	6'	1	1	72	72"	4 1/8"	3 7/8"
		2	2	72			
SCF	8'	1	1	59, 86, 96	96"	4 1/8"	3 7/8"
		2	2	59, 86, 96			
SCFT	8'	1	2	32, 34	96"	4 1/8"	3 7/8"
		2	4	32, 34			
SCFT	16'	1	2	59, 86, 96	192"	4 1/8"	3 7/8"

Two-Lamp Photometric Data



Coefficients of Utilization

Floor Cavity Reflectance 0.20

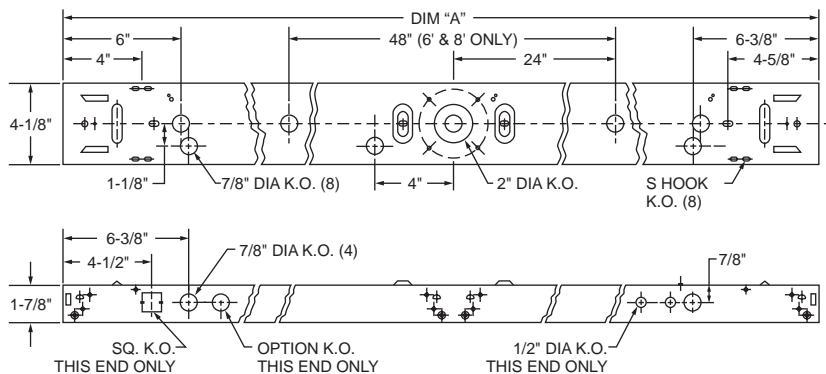
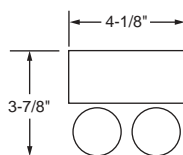
Room Cavity Ratio	RC RW	80%			50%			10%		
		50	30	10	50	30	10	50	30	10
1		87	84	80	78	75	72	65	63	62
2		76	69	63	67	62	58	57	54	51
3		66	59	52	58	52	48	49	45	42
4		58	50	44	52	46	40	44	39	35
5		50	43	37	45	38	34	39	34	30
6		45	37	31	40	33	29	35	30	26
7		40	32	26	36	29	24	31	26	22
8		36	28	22	33	26	22	27	22	19
9		32	24	19	29	22	18	25	20	16
10		29	22	17	26	20	15	22	18	14

SPECIFICATIONS

Housing is die-formed of cold-rolled steel for uniformity and stability. All metal components are phosphate coated and finished in baked white enamel providing a minimum reflectance factor of 85%. Quarter turn channel covers can be removed without the use of tools. All units include combination end plate/couplers. Rapid start and slimline fixtures are equipped with high power factor Class "P" ETL-CBM ballasts (120 volt 60 Hz is standard). Trigger start 20 watt units are UL-LPF. Fixtures are UL-listed and bear union and UL labels.

DIMENSIONS

All KOs are 7/8" dia. unless otherwise specified.



	DIM "A"	
2' FIXTURE	(610mm)	24"
3' FIXTURE	(914mm)	36"
4' FIXTURE	(1219mm)	48"
6' FIXTURE	(1829mm)	72"
8' FIXTURE	(2438mm)	96"
16' FIXTURE	(4877mm)	192"

NOTE: Do not flush mount T8 HO units. Suspend minimum 1-1/2" from surface.

Dimensions and specifications subject to change without notice.